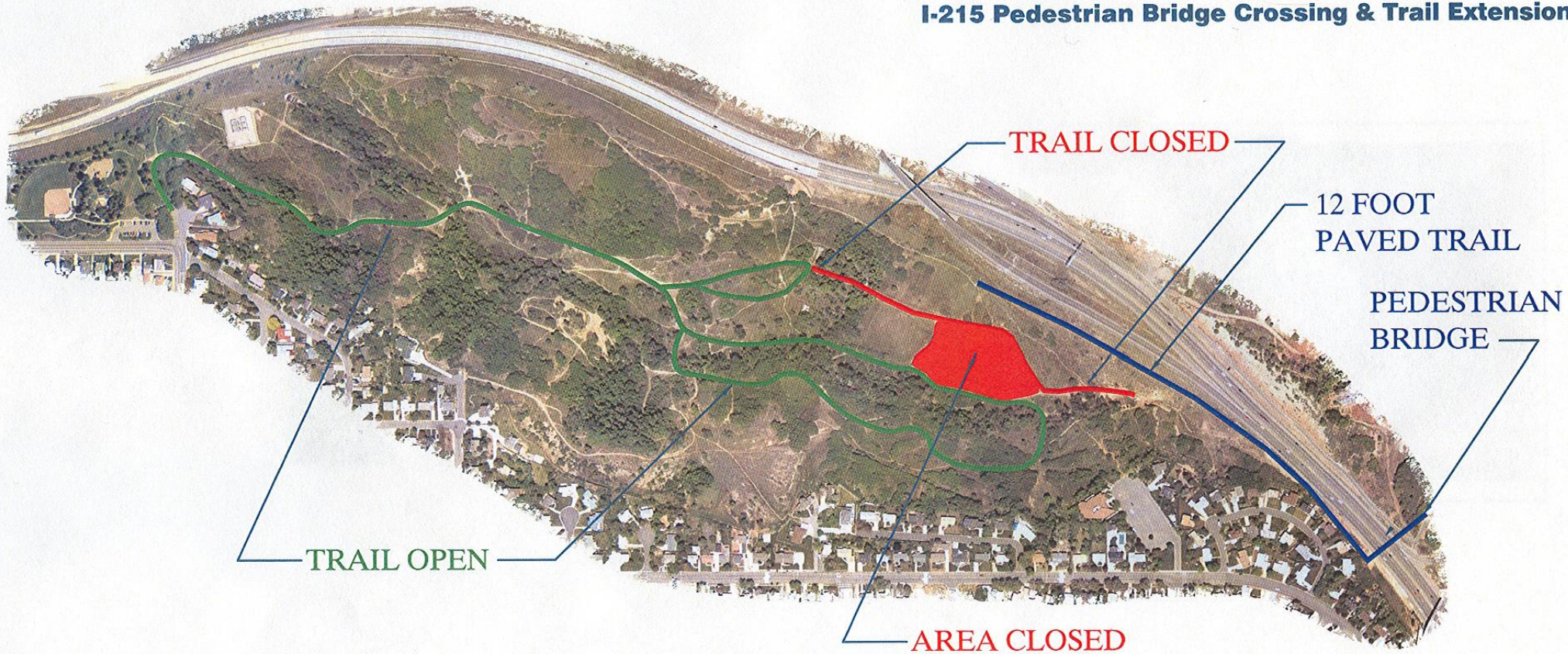


PARLEY'S TRAIL

I-215 Pedestrian Bridge Crossing & Trail Extension



Trail Construction will begin March 26, 2007 and continue through October 2007. Area and trail closures are shown on the map to protect all Park Users including pets. Questions related to trail construction or closures - please call Salt Lake County Parks & Recreation 468-2299.

